

UNIT PLAN - TYPE A - STUDIO

416 SQ. FT

SCALE: 3/16" = 1'-0"

CONSTRUCTION SET: 04.13.17

BASE SHEET: A3.01

11.29.2017

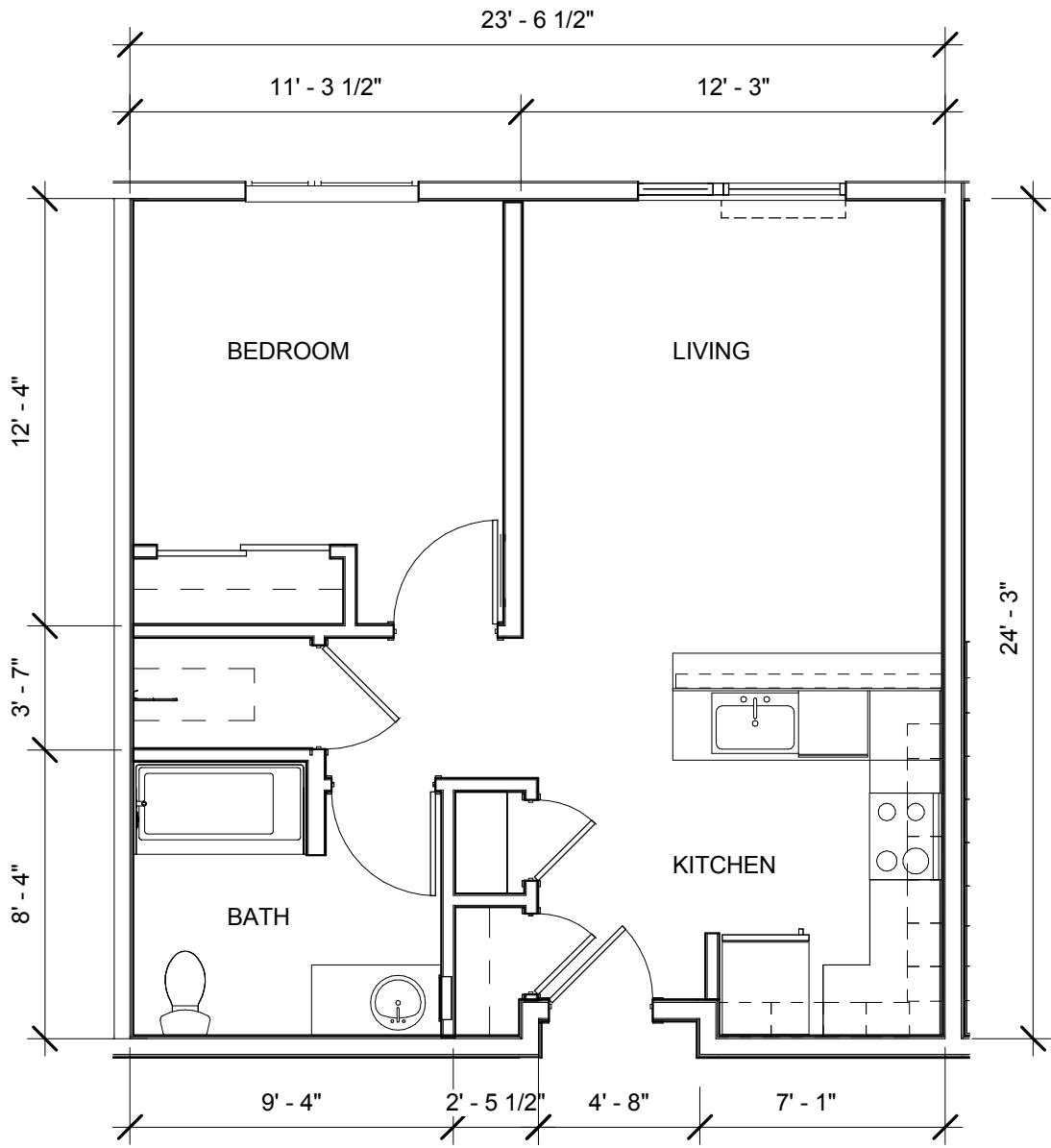
BEATRICE MORROW

3368 NE MARTIN LUTHER KING JR. BLVD.
 PORTLAND, OR 97212

COPYRIGHT - CARLETON HART ARCHITECTURE DO NOT REPRODUCE WITHOUT PERMISSION



CARLETON HART ARCHITECTURE P.C.
 830 SW 10th Avenue #200 Portland Oregon 97205
 503 243 2252 | www.carletonhart.com



UNIT PLAN - TYPE B - ONE BEDROOM

600 SQ. FT

SCALE: 3/16" = 1'-0"

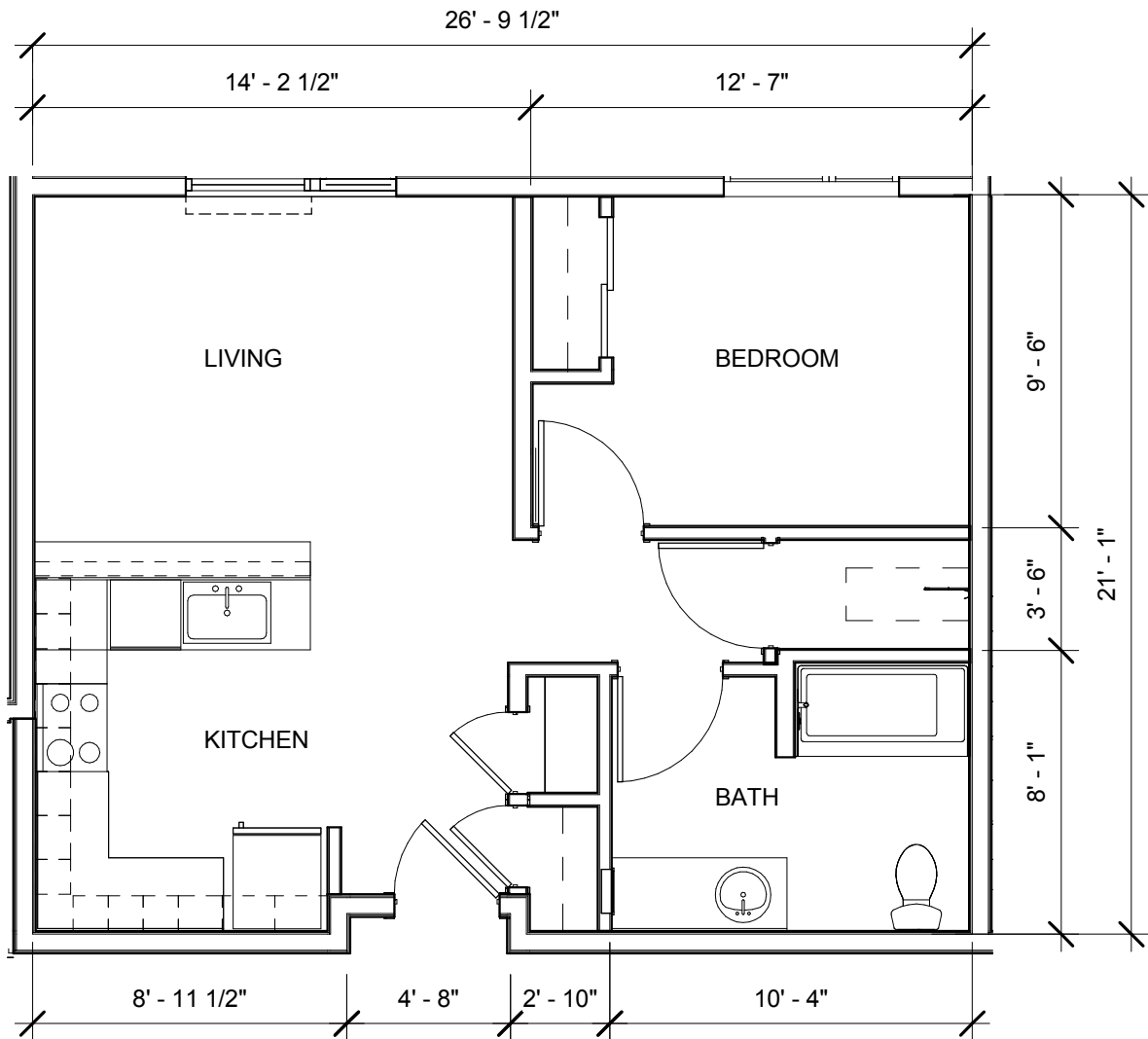
CONSTRUCTION SET: 04.13.17
 BASE SHEET: A3.01
 11.29.2017

BEATRICE MORROW
 3368 NE MARTIN LUTHER KING JR. BLVD.
 PORTLAND, OR 97212

COPYRIGHT - CARLETON HART ARCHITECTURE DO NOT REPRODUCE WITHOUT PERMISSION



CARLETON HART ARCHITECTURE P.C.
 830 SW 10th Avenue #200 Portland Oregon 97205
 503 243 2252 | www.carletonhart.com



UNIT PLAN - TYPE C - ONE BEDROOM

600 SQ. FT

SCALE: 3/16" = 1'-0"

CONSTRUCTION SET: 04.13.17

BASE SHEET: A3.01

11.29.2017

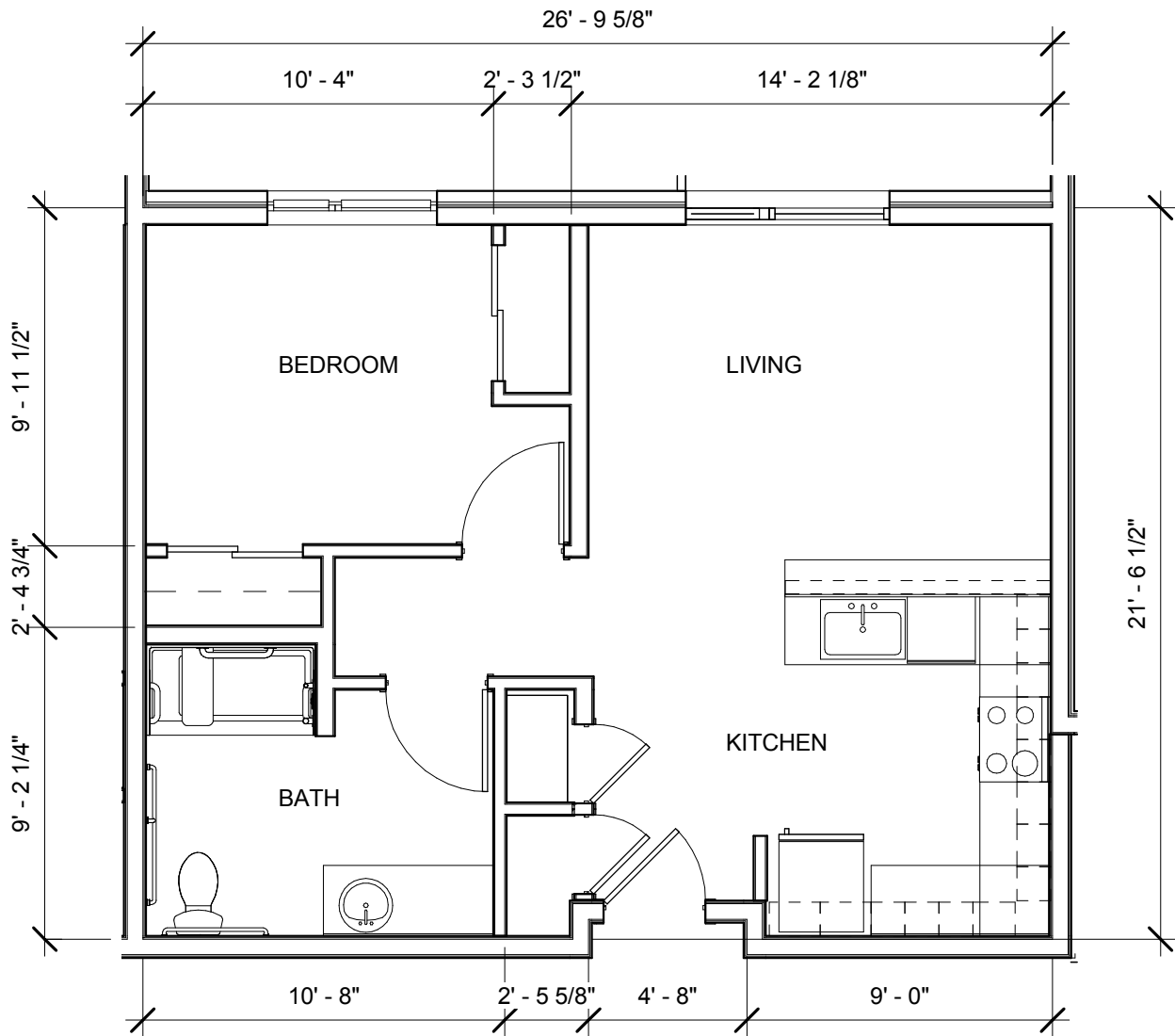
BEATRICE MORROW

3368 NE MARTIN LUTHER KING JR. BLVD.
PORTLAND, OR 97212

COPYRIGHT - CARLETON HART ARCHITECTURE DO NOT REPRODUCE WITHOUT PERMISSION



CARLETON HART ARCHITECTURE P.C.
830 SW 10th Avenue #200 Portland Oregon 97205
503 243 2252 | www.carletonhart.com



UNIT PLAN - TYPE C - ONE BEDROOM ACCESSIBLE

UFAS/ANSI 117 - TYPE A UNIT

600 SQ. FT

SCALE: 3/16" = 1'-0"

CONSTRUCTION SET: 04.13.17

BASE SHEET: A3.01

11.29.2017

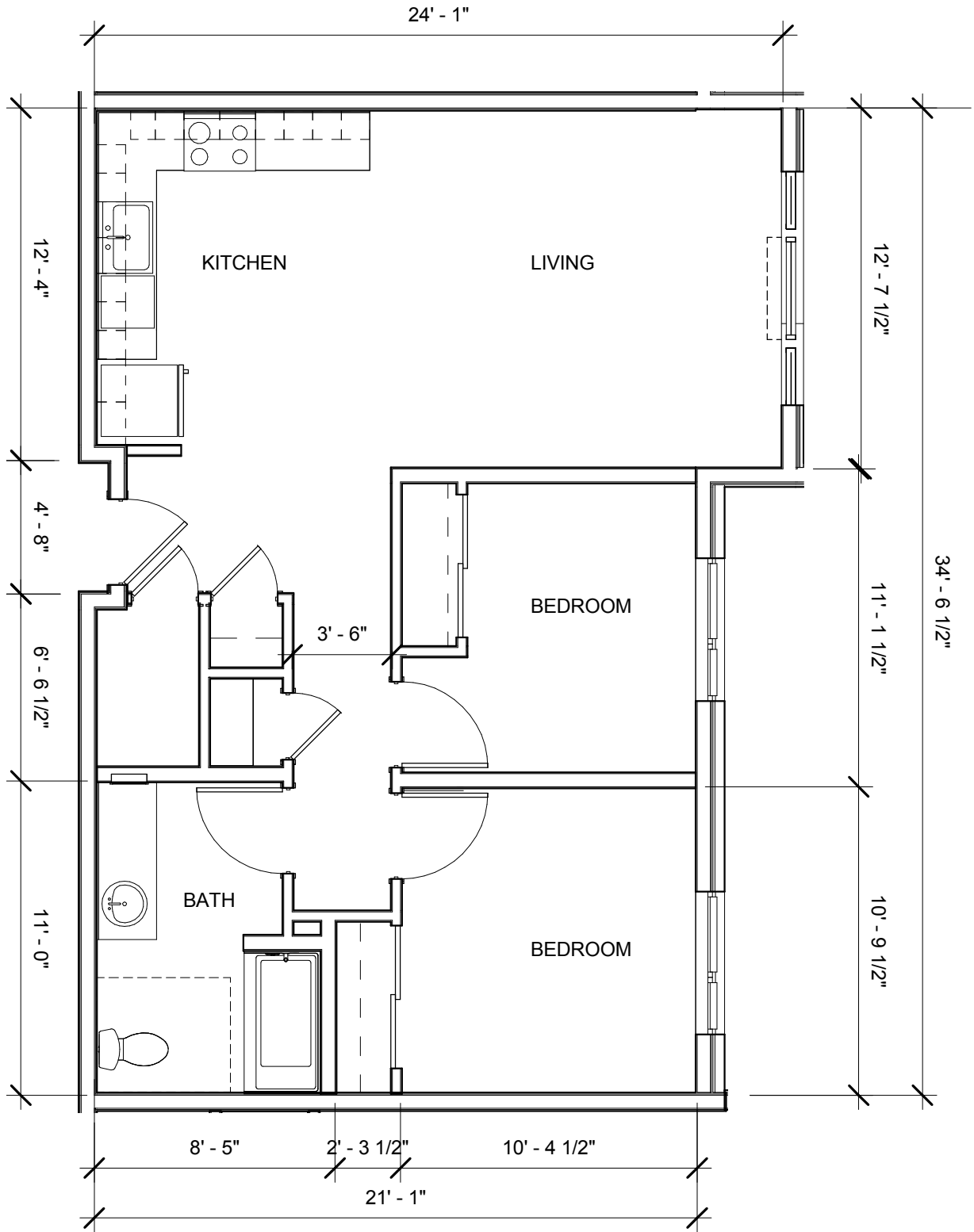
BEATRICE MORROW

3368 NE MARTIN LUTHER KING JR. BLVD.
PORTLAND, OR 97212

COPYRIGHT - CARLETON HART ARCHITECTURE DO NOT REPRODUCE WITHOUT PERMISSION



CARLETON HART ARCHITECTURE P.C.
830 SW 10th Avenue #200 Portland Oregon 97205
503 243 2252 | www.carletonhart.com



UNIT PLAN - TYPE D - TWO BEDROOM

805 SQ. FT

SCALE: 3/16" = 1'-0"

CONSTRUCTION SET: 04.13.17

BASE SHEET: A3.01

11.29.2017

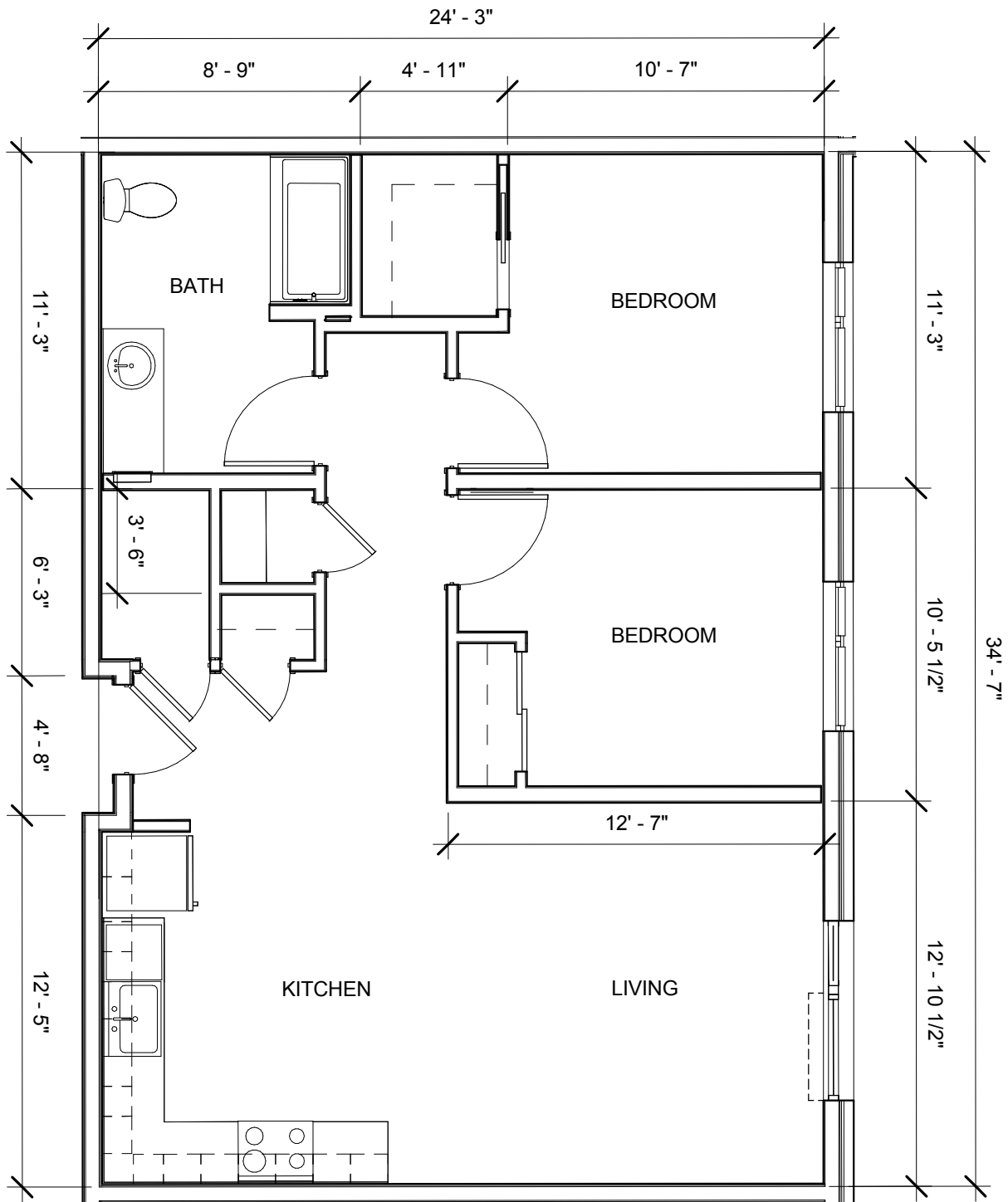
BEATRICE MORROW

3368 NE MARTIN LUTHER KING JR. BLVD.
 PORTLAND, OR 97212

COPYRIGHT - CARLETON HART ARCHITECTURE DO NOT REPRODUCE WITHOUT PERMISSION



CARLETON HART ARCHITECTURE P.C.
 830 SW 10th Avenue #200 Portland Oregon 97205
 503 243 2252 | www.carletonhart.com



UNIT PLAN - TYPE E - TWO BEDROOM

877 SQ. FT

SCALE: 3/16" = 1'-0"

CONSTRUCTION SET: 04.13.17

BASE SHEET: A3.01

11.29.2017

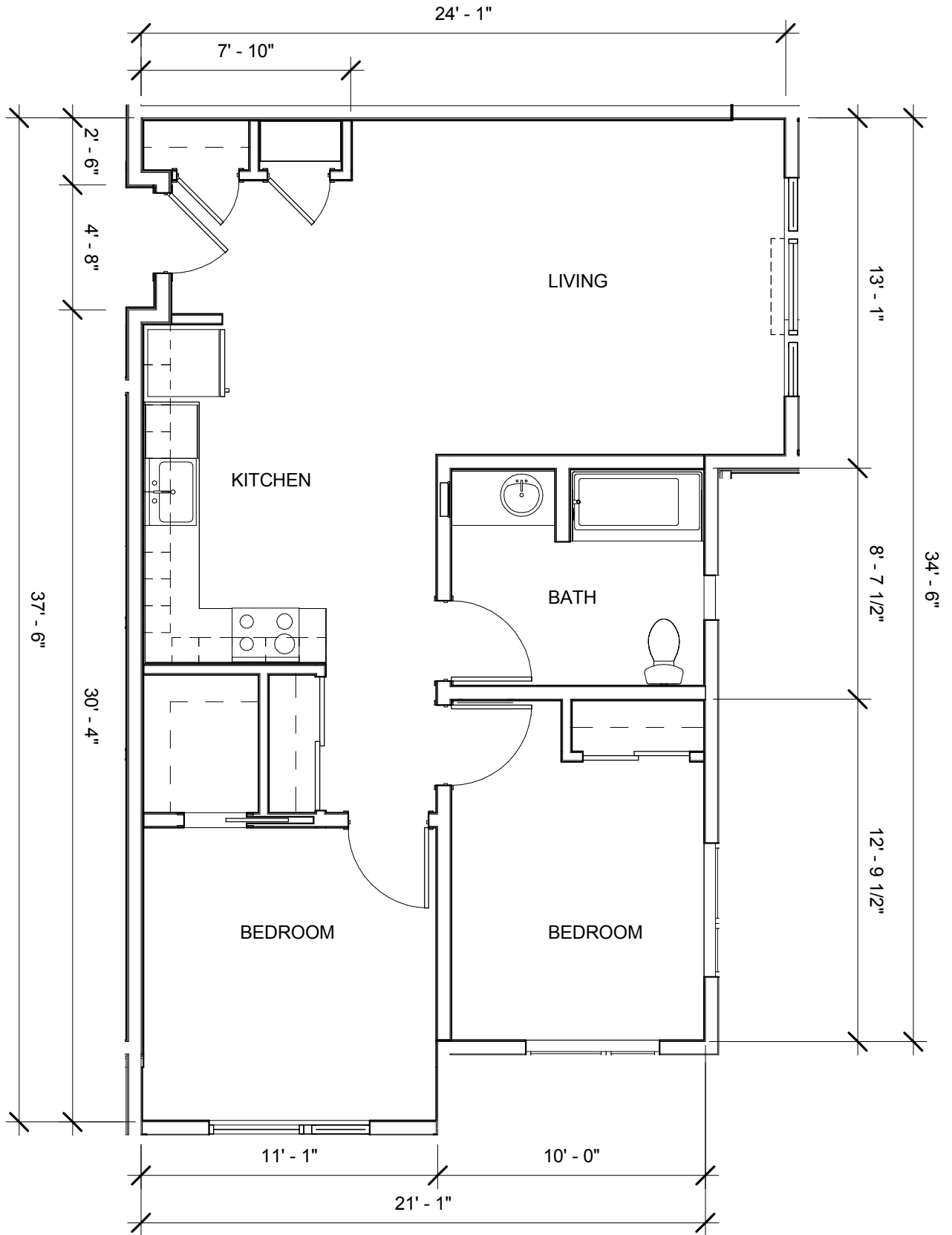
BEATRICE MORROW

3368 NE MARTIN LUTHER KING JR. BLVD.
 PORTLAND, OR 97212

COPYRIGHT - CARLETON HART ARCHITECTURE DO NOT REPRODUCE WITHOUT PERMISSION



CARLETON HART ARCHITECTURE P.C.
 830 SW 10th Avenue #200 Portland Oregon 97205
 503 243 2252 | www.carletonhart.com



UNIT PLAN - TYPE F - TWO BEDROOM

839 SQ. FT

SCALE: 3/16" = 1'-0"

CONSTRUCTION SET: 04.13.17

BASE SHEET: A3.02

11.29.2017

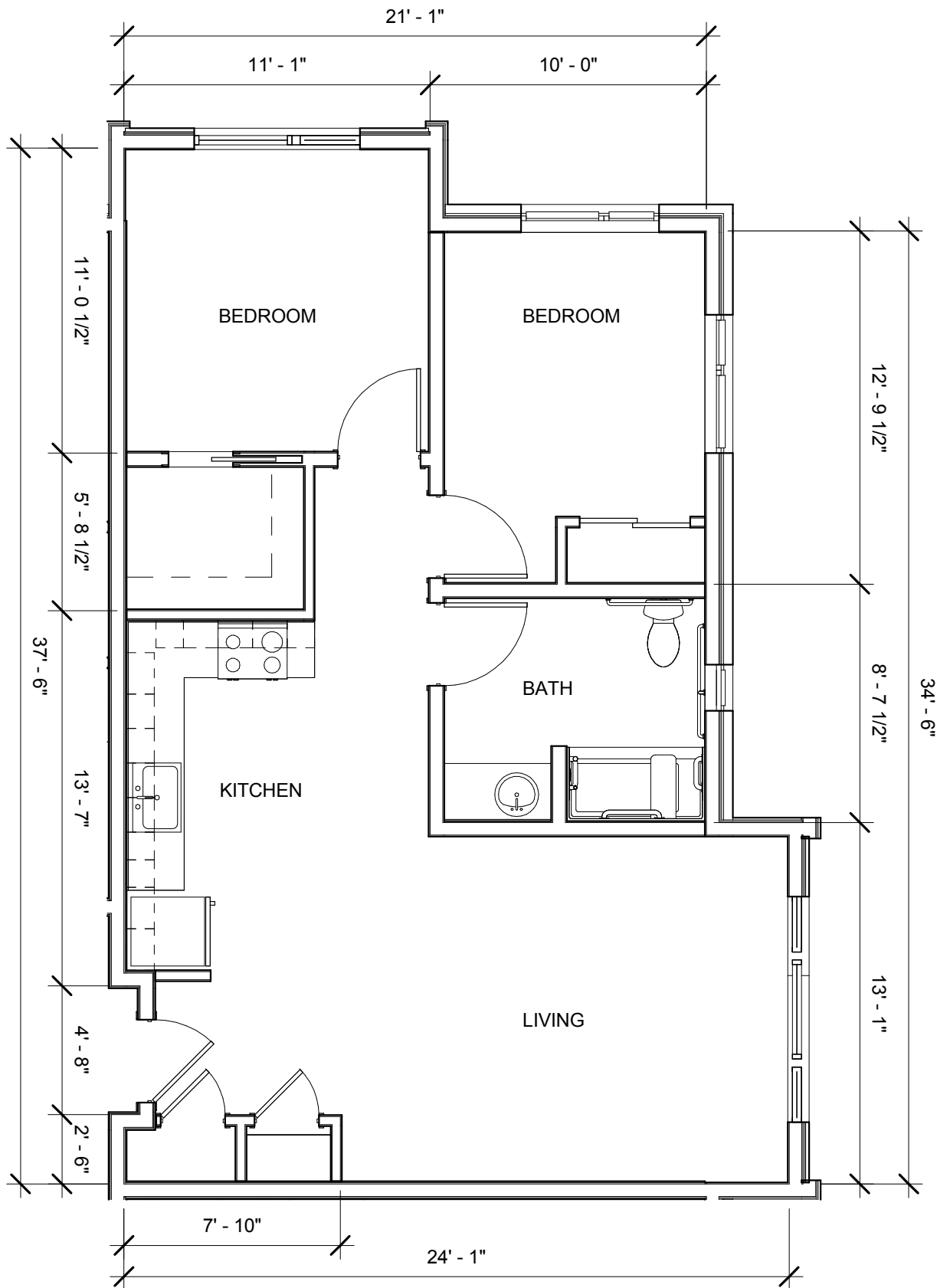
BEATRICE MORROW

3368 NE MARTIN LUTHER KING JR. BLVD.
 PORTLAND, OR 97212

COPYRIGHT - CARLETON HART ARCHITECTURE DO NOT REPRODUCE WITHOUT PERMISSION



CARLETON HART ARCHITECTURE P.C.
 830 SW 10th Avenue #200 Portland Oregon 97205
 503 243 2252 | www.carletonhart.com



UNIT PLAN - TYPE F - TWO BEDROOM ACCESSIBLE

UFAS/ANSI 117 - TYPE A UNIT

839 SQ. FT

SCALE: 3/16" = 1'-0"

CONSTRUCTION SET: 04.13.17

BASE SHEET: A3.02

11.29.2017

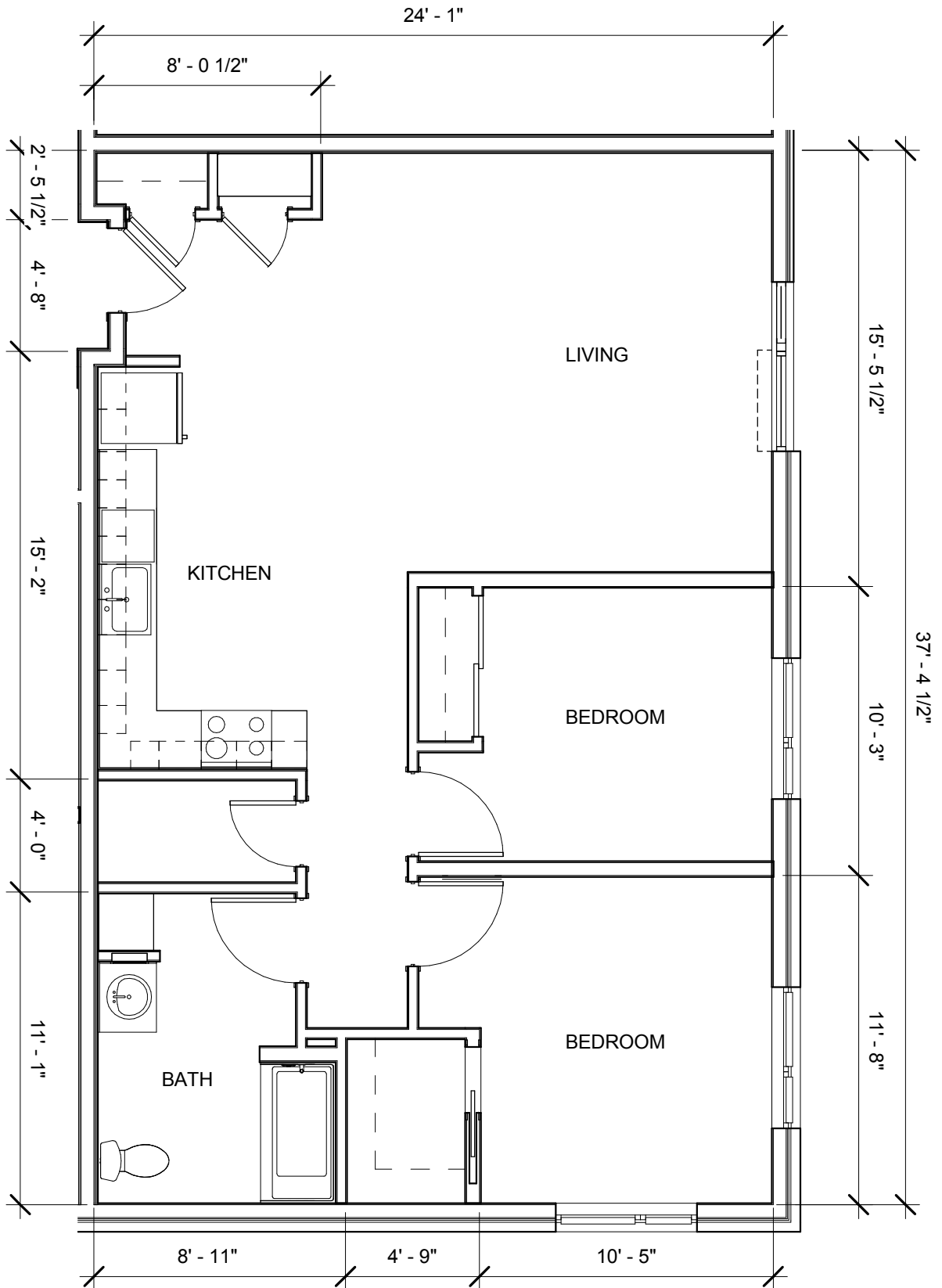
BEATRICE MORROW

3368 NE MARTIN LUTHER KING JR. BLVD.
PORTLAND, OR 97212

COPYRIGHT - CARLETON HART ARCHITECTURE DO NOT REPRODUCE WITHOUT PERMISSION



CARLETON HART ARCHITECTURE P.C.
830 SW 10th Avenue #200 Portland Oregon 97205
503 243 2252 | www.carletonhart.com



UNIT PLAN - TYPE G - TWO BEDROOM

944 SQ. FT

SCALE: 3/16" = 1'-0"

CONSTRUCTION SET: 04.13.17

BASE SHEET: A3.02

11.29.2017

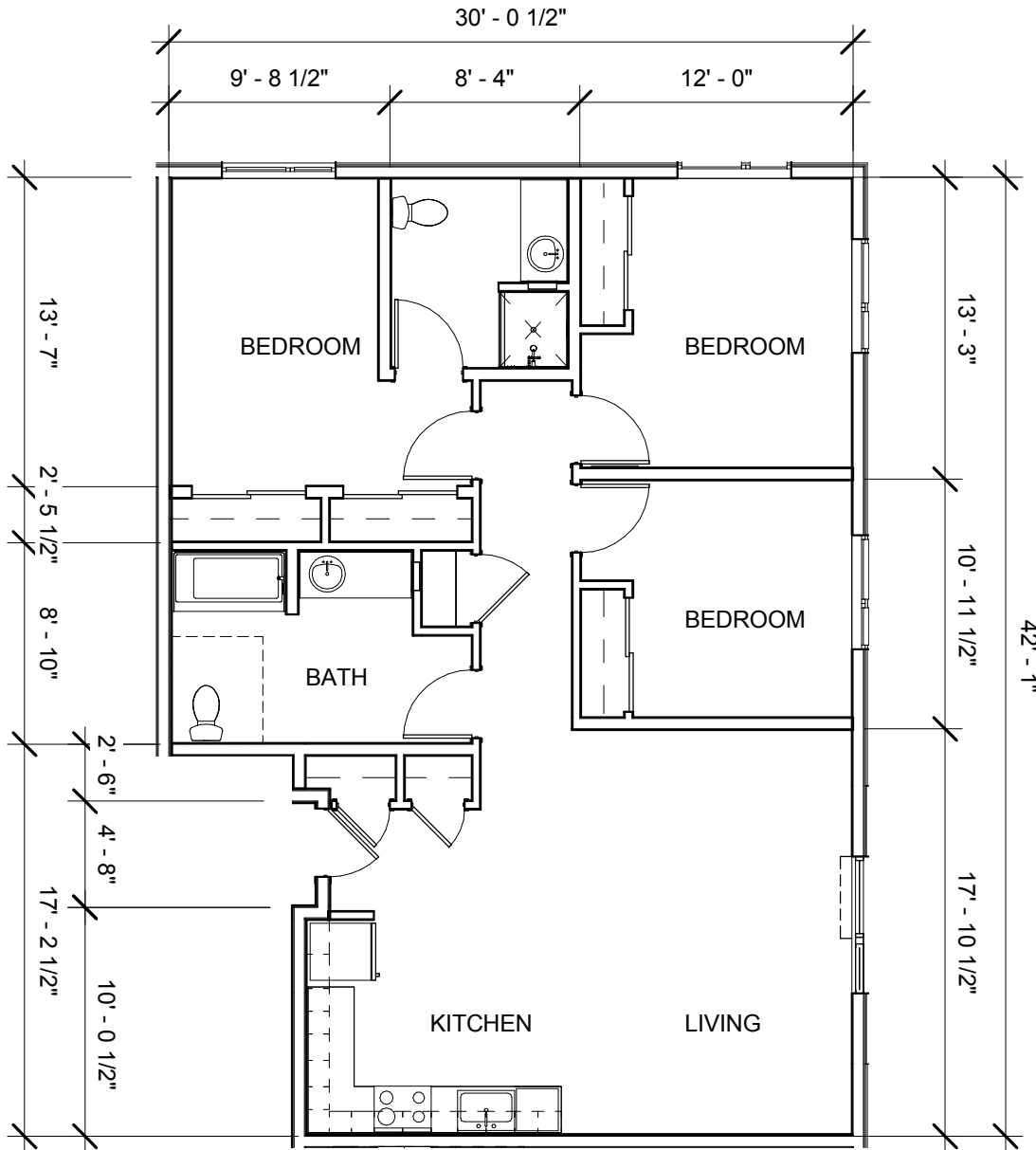
BEATRICE MORROW

3368 NE MARTIN LUTHER KING JR. BLVD.
PORTLAND, OR 97212

COPYRIGHT - CARLETON HART ARCHITECTURE DO NOT REPRODUCE WITHOUT PERMISSION



CARLETON HART ARCHITECTURE P.C.
830 SW 10th Avenue #200 Portland Oregon 97205
503 243 2252 | www.carletonhart.com



UNIT PLAN - TYPE H - THREE BEDROOM

1223 SQ. FT

SCALE: 1/8" = 1'-0"

CONSTRUCTION SET: 04.13.17
 BASE SHEET: A3.02

11.29.2017

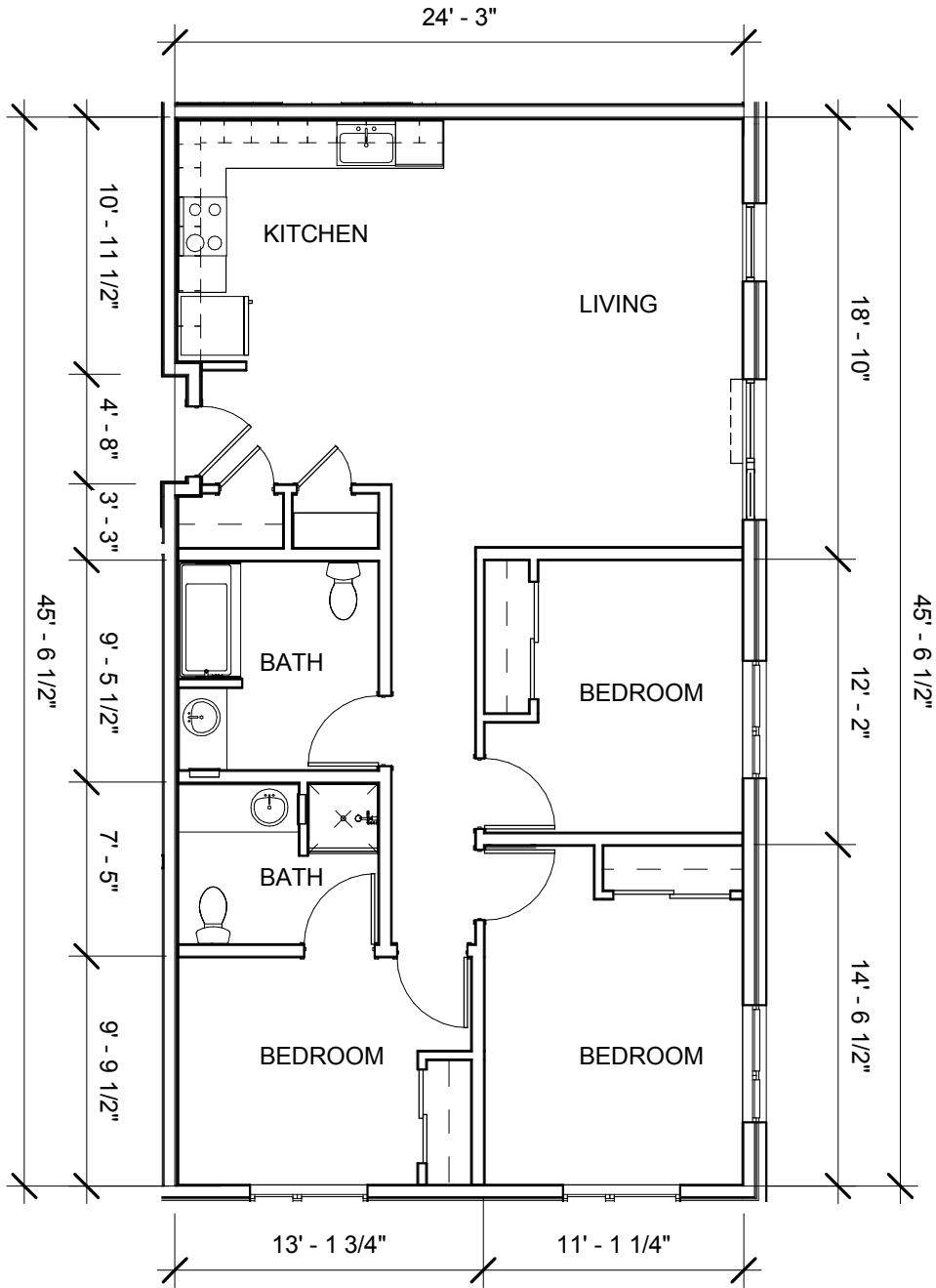
BEATRICE MORROW

3368 NE MARTIN LUTHER KING JR. BLVD.
 PORTLAND, OR 97212

COPYRIGHT - CARLETON HART ARCHITECTURE DO NOT REPRODUCE WITHOUT PERMISSION



CARLETON HART ARCHITECTURE P.C.
 830 SW 10th Avenue #200 Portland Oregon 97205
 503 243 2252 | www.carletonhart.com



UNIT PLAN - TYPE J - THREE BEDROOM

1152 SQ. FT

SCALE: 1/8" = 1'-0"

CONSTRUCTION SET: 04.13.17

BASE SHEET: A3.02

11.29.2017

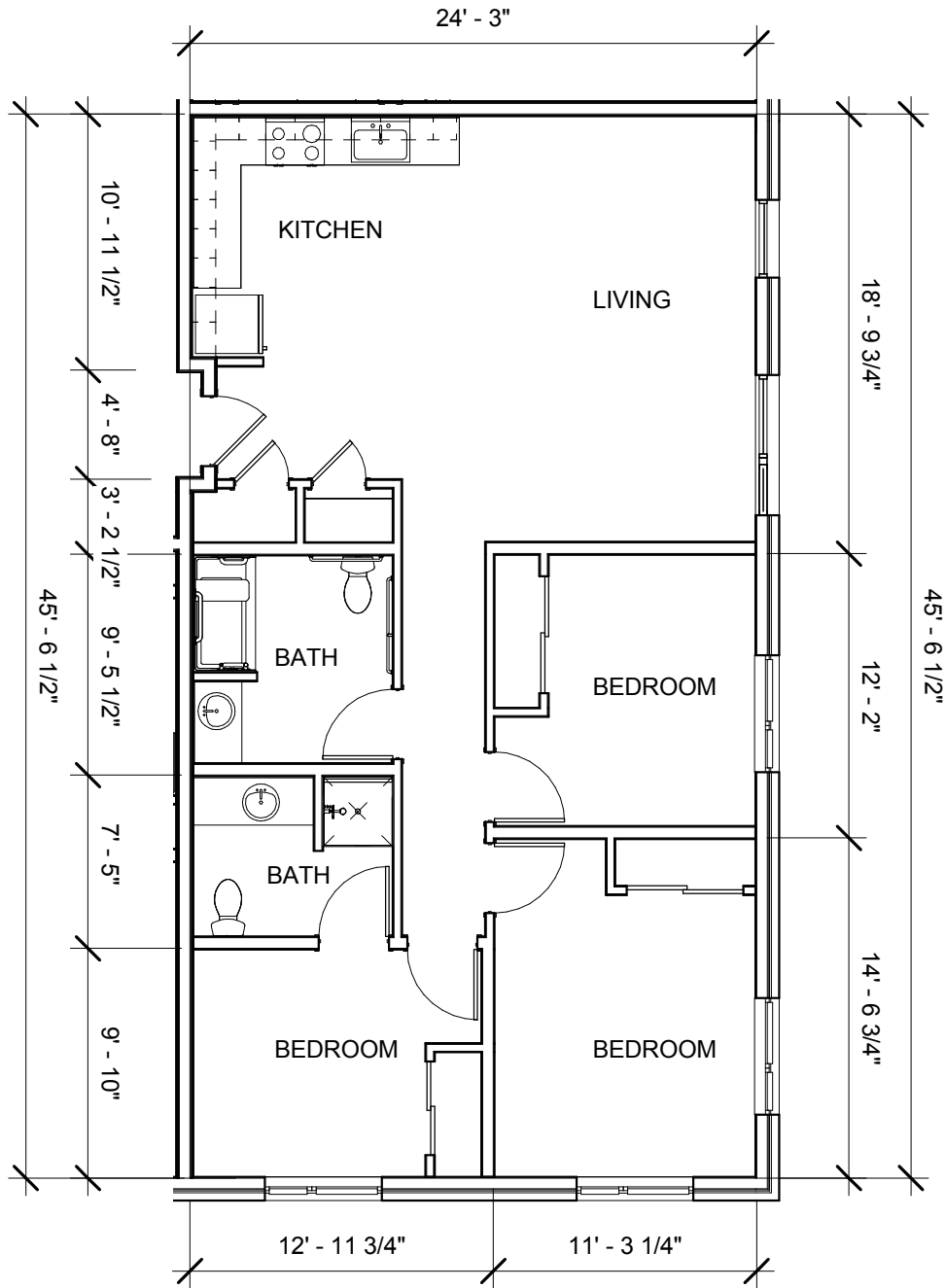
BEATRICE MORROW

3368 NE MARTIN LUTHER KING JR. BLVD.
 PORTLAND, OR 97212

COPYRIGHT - CARLETON HART ARCHITECTURE DO NOT REPRODUCE WITHOUT PERMISSION



CARLETON HART ARCHITECTURE P.C.
 830 SW 10th Avenue #200 Portland Oregon 97205
 503 243 2252 | www.carletonhart.com



UNIT PLAN - TYPE J - THREE BEDROOM ACCESSIBLE

UFAS/ANSI 117 - TYPE A UNIT

1152 SQ. FT

SCALE: 1/8" = 1'-0"

CONSTRUCTION SET: 04.13.17

BASE SHEET: A3.02

11.29.2017

BEATRICE MORROW

3368 NE MARTIN LUTHER KING JR. BLVD.
PORTLAND, OR 97212

COPYRIGHT - CARLETON HART ARCHITECTURE DO NOT REPRODUCE WITHOUT PERMISSION



CARLETON HART ARCHITECTURE P.C.
830 SW 10th Avenue #200 Portland Oregon 97205
503 243 2252 | www.carletonhart.com